

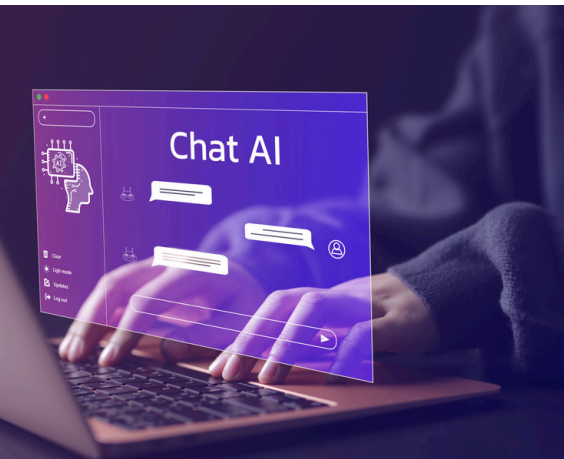
SenTRACK

Intelligent Video Analytics



WHAT IS SENTRACK?

SenTRACK, a **Gen AI-powered** Video Intelligence solution, leverages Vision Language Models (VLMs) to interpret video content with human-like understanding. Designed for adaptability, it evolves with your needs, enabling dynamic adjustments without depending solely on predefined rules or manual configurations, enhancing operational efficiency, security, and customer experience.



VISION

Custom Workflows in Minutes with USER PROMPTS

Set custom video analytics workflows in minutes using text prompts to create alerts rules that adapts to your needs. This intelligent vision agent offers unparalleled flexibility to changing protocols, overcoming the limitations of standard analytics models.

By capturing comprehensive data, it ensures critical details are never missed, enabling your team to focus on taking action when it matters most.

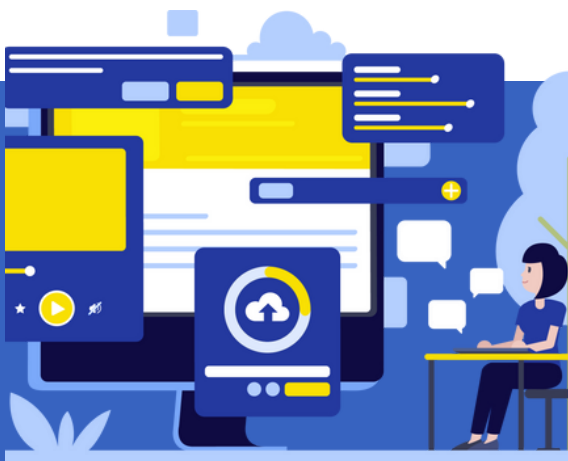
Stop watching video screens and let **VISION** do the job for you. From seaports and airports to land transportation, smart cities, and correctional facilities, leverage advanced Video Intelligence AI Agent tailored precisely to meet the unique requirements of your industry that truly enhance your operational efficiency, safety, and compliance.



**Ask Video Anything
using Natural Language**



**Transform Vision
into Action**

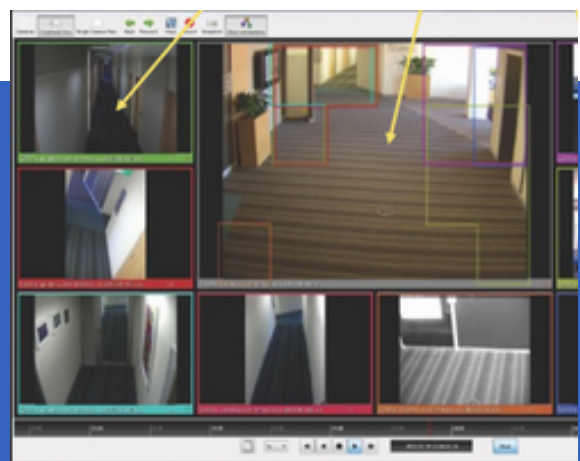


PLUS

Pre-Configured and Bundled Offering

Transform video data into searchable, actionable, and measurable insights.

Empower teams with pre-configured, AI-powered technology and adapt to evolving security needs in a cost-effective way.



ESSENTIAL

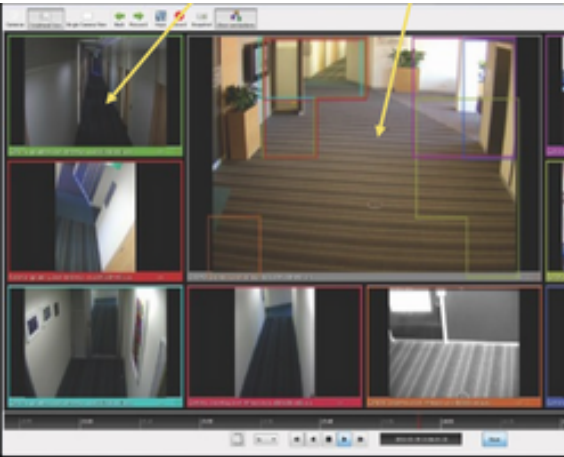
Video Intelligence - Scalable, Real-Time

Quickly review security incidents and make informed decisions with real-time alerts.

Essential is designed for sites with a smaller set of cameras. For sites with larger channels, consider exploring SenTRACK Plus.

WHAT IS SENTRACK?

SenTRACK, a **Gen AI-powered** Video Intelligence solution, leverages Vision Language Models (VLMs) to interpret video content with human-like understanding. Designed for adaptability, it evolves with your needs, enabling dynamic adjustments without depending solely on predefined rules or manual configurations, enhancing operational efficiency, security, and customer experience.



ESSENTIAL

Video Intelligence - Scalable, in Real-Time

Receive real-time alerts whenever specified activities, such as intrusions or unattended objects, are detected. This enables operators to quickly review incidents and make informed decisions, maximizing the value of video surveillance investments.

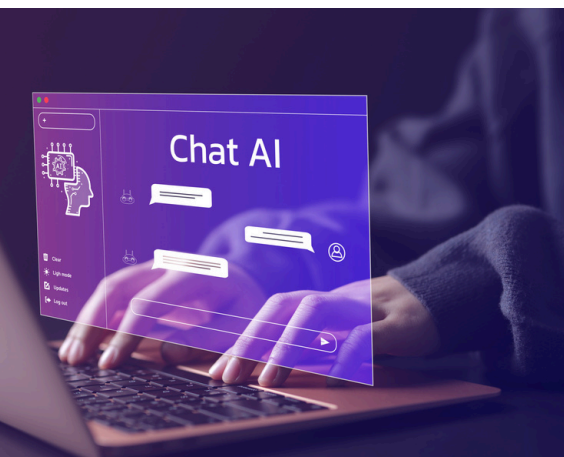
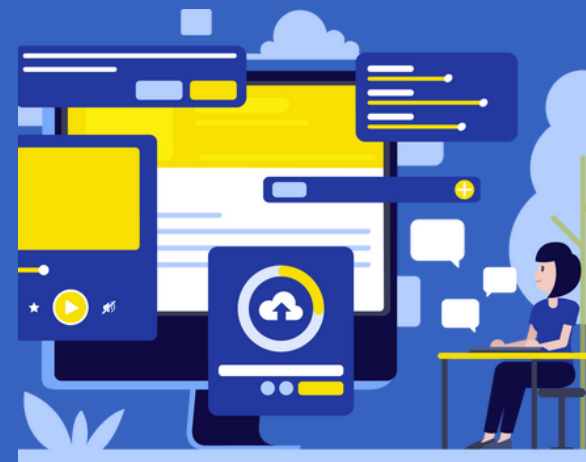
SenTRACK Essential is designed for sites with a smaller set of cameras. For sites with higher channels, consider exploring SenTRACK Plus.

PLUS

Pre-Configured and Bundled Surveillance Offering

Harness intelligent video analytics to transform video data into searchable, actionable, and measurable insights, supported by real-time alerts that empower teams and adapt to evolving security needs.

With pre-configured software and hardware, deploy AI-powered, scalable technology in a cost-effective package designed to meet the needs of businesses of all sizes, from small enterprises to large multi-site organizations.



VISION

Custom Workflows in Minutes with USER PROMPTS

Set custom video analytics workflows in minutes using text prompts to create alerts rules that adapts to your needs. This intelligent vision agent offers unparalleled flexibility to changing protocols, overcoming the limitations of standard analytics models.

By capturing comprehensive data, it ensures critical details are never missed, enabling your team to focus on taking action when it matters most.



GENERATE BUSINESS DELIVERABLES

Enhance security operations and empower your control centre to identify critical situations in real-time and accelerating forensic investigations.

Expand usage to real-time and business intelligence applications for uncovering inefficiencies and uncommon scenarios.



NEAR ZERO FALSE ALERTS

Our adaptive AI filters out non-critical alarms, prioritises what's important, reducing stress, fatigue, and panic caused by false alerts.

This helps to cut through the noise of false alarm and allow security to respond to potential threats faster.

SENTRACK VISION INTELLIGENCE AGENT CAPABILITIES

FEATURES	ESSENTIAL	PLUS	VISION
INTRUSION Detect crossings by vehicle or person in restricted area	✓	✓	✓
LOITERING Identify individuals lingering in specific areas, generate alerts	✓	✓	✓
OBJECT ATTRIBUTE Identify unattended bag (backpack, hangbag, suitcase), vehicle, pet	✓	✓	✓
PATH Identify vehicle or person objects traveling along one or more user-defined path, including vehicle reversing, wrong way detection	✓	✓	✓
PEOPLE COUNTING Count people in an area or in a certain direction, track queues, crowd formations, measure occupancy, traffic flows, heatmaps	✓	✓	✓
TIME ATTRIBUTE Derive insights about queue time, dwell time, engagement time, periodic cycle	✓	✓	✓
PERSON ATTRIBUTES Based on age, gender or characteristics, including lower and upper wear (by colour)		✓	✓
FACE RECOGNITION Face matching, face capture, body capture, face-body bond		✓	✓

SENTRACK VISION INTELLIGENCE AGENT CAPABILITIES			
FEATURES	ESSENTIAL	PLUS	VISION
ACTION ATTRIBUTES Detect actions such as running, falling, fighting, smoking, watching or answering the phone, person gathering, sleep, weapon		✓	✓
WORK SAFETY Detect wearing safety helmet, belt, harness, mask, reflective vest			✓
FIRE ALERT Detect smoke, flame			✓
ROLE BASED ATTRIBUTE Includes context for role like drowning or fighting			✓
CUSTOM CLASSIFIED Define, train and leverage custom rules for your specific and ever-expanding business needs			✓
ADD-ONS			
LICENSE PLATE RECOGNITION Recognize license plates based on watchlists for vehicle behavior analysis and traffic optimization	✓	✓	✓
AUTO-LEARN Automatically learns the relation between different cameras enabling tag & trace	✓	✓	✓
FALSE ALARM FILTER Reduce false alarms generated by CCTVs & video analytics systems	✓	✓	✓

About SenSen

SenSen Networks Ltd., (ASX:SNS) is a world leader in AI technology with the pioneering Live Awareness AI Platform that analyses data from cameras and sensors in real-world spaces. SenSen's solutions are alleviating traffic congestion, enhancing road and personal safety, and elevating urban life through its cutting-edge technologies of computer vision & multi-sensor fusion AI, leading the future of IoT for a safer and more efficient global landscape.

For more information, contact at sales@sensen.ai or visit www.sensen.ai