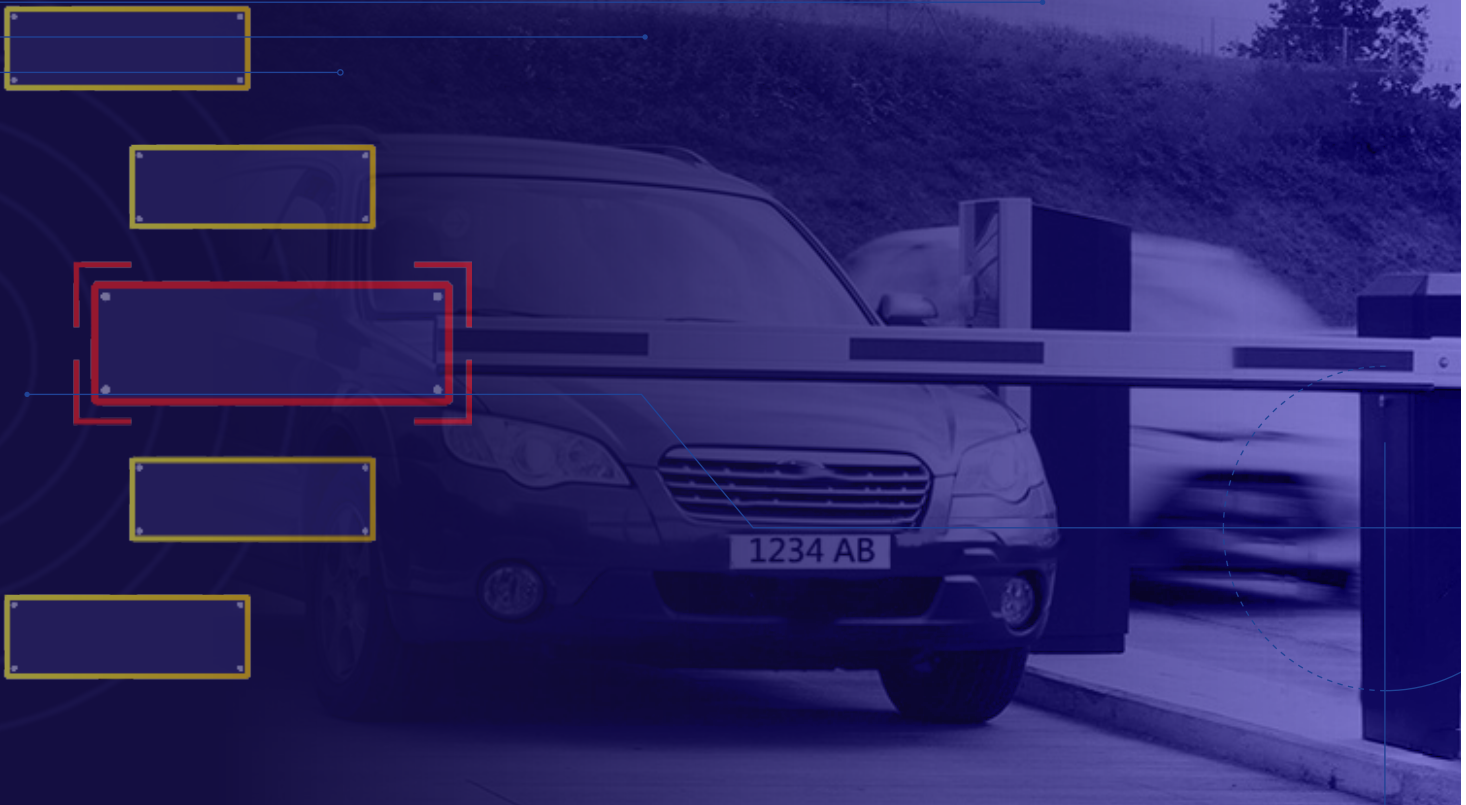
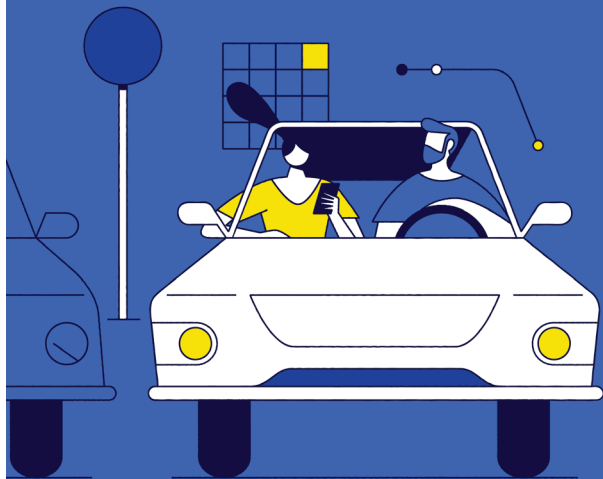


Gated & Gateless ALPR Access Control

SenSCAN

Automate access of authorized and restricted vehicles with SenSen's hybrid technology to manage any type of car park ranging from small sites to multi-sites spread across various locations, single or multi-storey parking facilities that can be integrated to work with existing systems.





SenSCAN

SenSCAN is a highly accurate and affordable Automated License Plate Recognition (ALPR) solution consisting of patented software with intelligent algorithms and AI. It works with any off-the-shelf, low-cost hardware and has a cloud-based back-office, enabling robust and highly accurate evidence generation for gated and gateless access control systems.

SenSen's gated and gateless ALPR access control system administers the entry and exit of the vehicle with our highly accurate license plate recognition using AI. Our solution detects fraudulent access, ticket exchange, or attempted vehicle theft and sends notifications to the parking operator. Our solution is flexible to integrate with any existing or new external systems.

What this solution can do for you

Improving Operational Productivity

Reduced administration with system automation & ability to consume information in real-time.

Take Control of Your Hybrid World

Manage all your needs across on-prem or cloud server, with industry's most flexible deployment options.

Intuitive and Secure

State-of-the art back-office platform with seamless integrations with any external boom gates and permit systems.

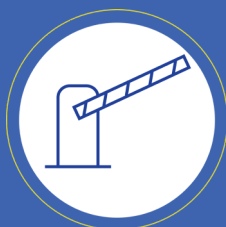
Streamline Enforcement Process

Manage lists & regulations from a single software package that centrally controls access tasks making process efficient.

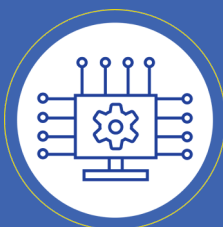
Key Features



License plate detection & capture



Cost effective end-to-end solution



Live dashboards, reporting & analytics



Verifies alerts with permit data



Synergy with existing & external systems

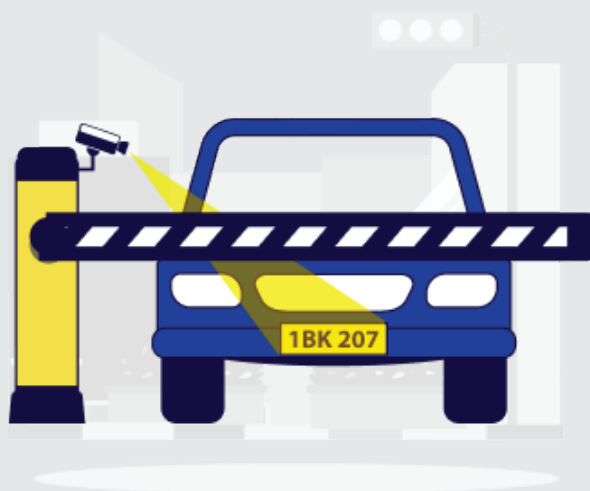
Positively transforming people's lives through Sensor AI

Gated ALPR Access Control System

SenSen's Gated ALPR access control systems integrate with existing boom gates/shutters and provide an added layer of location management with improved overall security infrastructure.

Our system supports and manages various kinds of vehicle access lists for real-time matching and alerting, allowing only authorized vehicles to use the parking lot.

Our solution effectively controls and manages unlimited whitelists, blacklists, scofflaw lists, etc.



Key Benefits

Frictionless access

Generates real-time alerts

Hands-off approach to vehicle access control

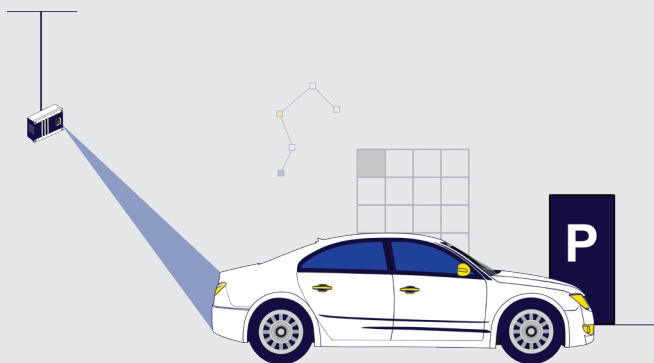
Flexible integration with boom gate and third-party systems

Gateless Access Control System

SenSen's on-field system consists of a highly efficient and robust algorithm that detects all restricted vehicles entering the parking space to keep traffic flow and parking efficient and smooth.

Our product is a simple plug-n-play system in open space that allows authorities to bypass expensive and time-consuming installation.

All entry-exit data is aggregated, and upon any violation such as overstay or non-permit parking, information is exported for ticket issuance.



Key Benefits

Cost-effective and extremely portable

Flexible network and power options

Accurate data even in harsh environmental conditions

Effectively improving traffic flow & user experience

API INTEGRATIONS



REPRESENTATIVE CUSTOMERS



SenSen Networks

Australia | Canada | India | USA | Singapore

sales@sensen.ai | www.sensen.ai

*Transforming people's lives
through Sensor AI technologies.*

Australia

+61 3 9417 5368

USA

+1 702 825 0882

India

+91 40-29882270

Singapore

+65 9624 9834