

Spot Speed



UNPARALLELED TECHNOLOGY

Independent Speed measurement using LiDAR and camera pixel technology



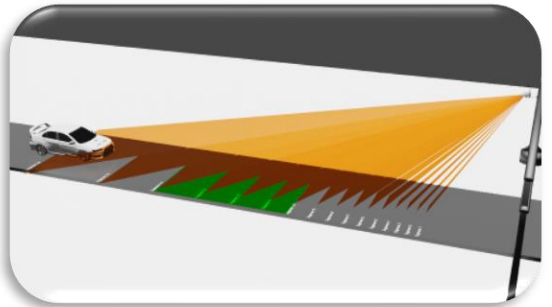
TRIGGERLESS VIDEO BASED DETECTION

Achieves over 98% detection rate without the need for external triggers and other sensors



HIGHLY ACCURATE AND EFFICIENT

Captures vehicle travelling up to 120kmph



“By removing expensive barriers to entry, cities worldwide can provide their citizens with a number of civic services, including fair parking and guidance solutions, as well as ensuring they are safe and clean to live in.”

Subhash Challa, CEO - SenSen Networks



Queensland Government
Department of Transport and Main Roads

“Solution works with high accuracy with advanced Machine Learning and Deep learning Technology.”

Department of Transport and Main Roads, Australia

Why Spot Speed



THE SENSEN SPOT SPEED DETECTING LPR

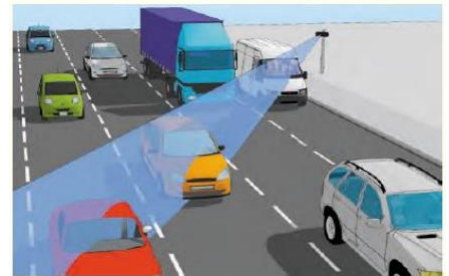
The solution is a novel system for vehicle speed estimation and detection speeding vehicles using state-of-the-art AI to locate the license plate of a passing vehicle which then used for tracking serving cities to implement, manage and monitor road safety plans.

SOLUTION HIGHLIGHTS

- Multi-megapixel, high frame rate, high sensitivity machine vision cameras
- Low footprint, light weight, high-capacity battery technology
- High bandwidth 4G-5G communication networks
- Highly accurate, Trigger-less, Video based Vehicle Detection
- 24x7 consistent operation unaffected by darkness or by sun glare.
- Available in multiple configurations – Fixed and Mobile

KEY FEATURES

- End-to-end speed enforcement solution
- Accuracy of 85%.
- Weather-proof enclosure
- Cloud and edge processing capabilities
- Ease of installation & commissioning
- Minimal ongoing maintenance
- Cloud back system for enforcement events, reports and analytics based on configurable speeding threshold



KEY BENEFITS

- Instantaneous speed detection
- Instantaneous speed enforcement
- Evidence capturing in form of high-resolution image and video
- Flash units for illumination using minimum power
- Vehicle identification and matching
- Extensive analytics on key indices

BUSINESS OUTCOMES

- Transforming the way authorities can manage road safety plans
- Improved detection rates
- High processing and operation flexibility in a cost-effective manner

Sensen.ai

Level 1, 9 Harper Street, Abbotsford,

Victoria, 3067 Australia

Website - www.sensen.ai

Melbourne

(+61) 3 9417 5368

Sydney

(+61) 3 9417 5368

India

(+91) 40-29882270

Singapore

(+65) 9624 9834

sales@sensen.ai