

# GeminEYE Lightbar



## The next evolution in parking enforcement

World's most advanced, award winning, end-to-end Civic compliance and Enforcement solution.



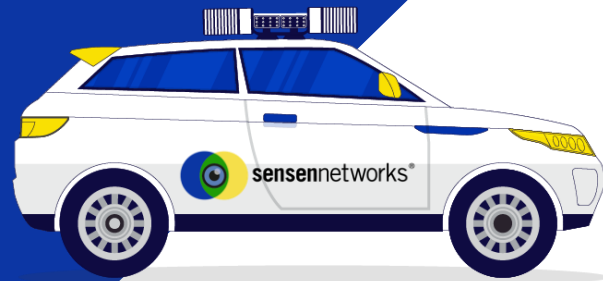
## Improve staff safety on duties

Eliminate the need for foot patrol, which is slow, inefficient and potentially dangerous.



## Improve Productivity of parking operations

Expand coverage to include all areas. All the enforcement officer needs to do is drive the vehicle.



*"By removing expensive barriers to entry, cities worldwide can provide their citizens with a number of civic services, including fair parking and guidance solutions, as well as ensuring they are safe and clean to live in."*

Subhash Challa, CEO - SenSen Networks



*"GeminEYE enhances the contactless permits and timed parking payment."*

National Capital Authority, Australia



*"The City Council wants to move over to Pay-By-Plate, where GeminEYE Bylaw enforcement come into play."*

City of Las Vegas, United States



*"GeminEYE Lightbar improves civic compliance, tracking traffic data and supporting law enforcement."*

Care Park Wellington, New Zealand



*"With 36,000 metered parking spaces, it is the third largest such parking system in USA."*

Chicago parking Meters, United States

# Why GeminEYE Lightbar



## THE SLEEK DESIGN

Designed for the future, GeminEYE Lightbar is of highest quality and engineered to perform to optimum standards.

- Low-cost & light-weight
- Compatible with all vehicle types



## THE BENEFITS

With GeminEYE LPR accuracy in real-time, it will increase your organization's productivity and returns.

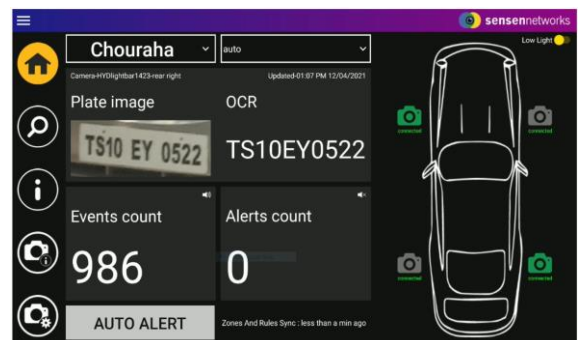
Either it's an on-street and off-street car parks, collecting data on people and vehicle movements, GeminEYE SDK enables your business to streamline and automate tasks, improve processes, and build your custom applications.

- Real-time processing on the edge - Rather than sending data to a central server, GeminEYE processes it on the edge, delivering faster results than traditional big data applications.
- Video evidence - It's difficult for a perpetrator to argue against video footage captured in real time. With always-on capability, GeminEYE makes this possible.
- Processing speed - GeminEYE can process a high volume of video footage in real time and give decision makers immediate access to important data faster than ever before.
- Greater accuracy - GeminEYE has been tested in the heat of Australia, congestion of Singapore and icy climates of Canada and Scandinavia, meaning we extract accurate data in the toughest conditions.
- Fast business insights - edge processing means no delays, and corporate intelligence of the world's smartest cities means our knowledge is passed to you, with the right information at your fingertips.
- Greater flexibility - By distilling smart city analytics into a smartphone app, it provides greater flexibility. Whether housed in a weatherproof container, attached to the handlebars of a bike or carried in a users hand, GeminEYE offers the flexibility to analyse any location when it is needed most.
- Software-as-a-Service (SaaS) - Remove CAPEX costs by utilising GeminEYE SaaS pricing model, turning solutions on and off to suit your needs, and leveraging the latest in smart city analytics.

## INTEGRATE & CUSTOMIZE

The Back Office System (BOS) is a dynamic platform which receives data from the GeminEYE mobile app and processes it in real time to generate business data. Users receive:

- Live detection in the form of alerts & events
- Customised options to view detected images
- User admin for role assigning
- Sound notification of live alerts & events
- Handy search function
- On/off toggle for live alert & events
- Business data downloadable from the web app



SenSen Networks Group PTY LTD

Level 1, 9 Harper Street, Abbotsford,

Victoria, 3067 Australia

Website – [www.sensen.ai](http://www.sensen.ai)

Melbourne

(+61) 3 9417 5368

Sydney

(+61) 3 9417 5368

India

(+91) 40-29882270

Singapore

(+65) 9624 9834

[sales@sensen.ai](mailto:sales@sensen.ai)