

Digitization of City Assets & Audit



Innovative Business solution

AI-powered business solution that digitises key Information for every city scenario



Easy integration

Build functionality into the existing application that allows the motorist to decipher parking information.



Improve Productivity

Solution understands all information on street signs and provides relevant data in real time for every discrete location



"Enter the data-fusion evolution, We use lightweight machine learning-capable devices and power our solutions with software that streamlines the extraction of hyper-accurate data, both statically or in motion, on urban arterial roads and motorways by combining high-resolution cameras, multi-spectral vision, GPS and video analytics."

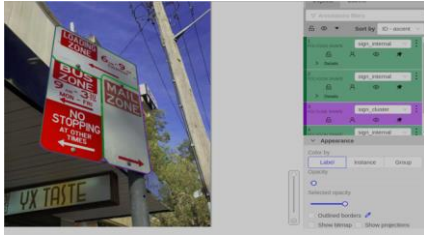
Subhash Challa, CEO - SenSen Networks



Ubi Park, Australia

"Digitization of assets is important to provide a better parking experience and empower the world to travel smarter."

Why Digitization of City Assets & Audits



Solution Overview

Our Solution uses image mapping technology to understand complex and clustered parking signs with multiple parking rules, ensuring the safety of users and compliance with regulations, without altering the physical infrastructure on the street.

EDGE FEATURES

- SenSen's in-house road asset detection software
- Patented state-of-the-art road asset GPS estimation
- Recorded high-resolution videos
- Seamless integration with SenSen's cloud-hosted back office (BOS)

BACK-OFFICE FEATURES

- Secured relational database for central management of assets
- Review interfaces for asset audits
- Survey of assets by precise location
- Drawing enforcement zones with business rules
- APIs to export the audited data to GIS systems

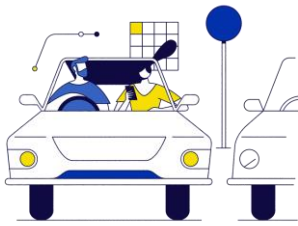


Photo of Sign Board

KEY FEATURES

- Collection of information on zones, including all sign categories
- Identifying the location and Zone ID using a combination of GPS and database of stored reference images
- Detection of sign boards including GPS coordinates to very high accuracy
- Maintaining a database of assets and metadata information based on geolocation
- Cloud service for matching input images with target objects
- Returning the metadata of the matched reference images



GPS Location

ALL-IN-ONE SOLUTION

- Low cost, rapid deployment, operation ready
- Fully automatic end-to-end solution
- Edge processing and cloud data central management

BUSINESS OUTCOMES

- Increase car park utilization,
- Help council and asset owners quantify the infrastructure under their management
- Provide an exceptional customer experience by decoding parking signs for motorists.



Sensen.ai

Level 1, 9 Harper Street, Abbotsford,

Victoria, 3067 Australia

Website - www.sensen.ai

Melbourne

Sydney

India

Singapore

(+61) 3 9417 5368

(+61) 3 9417 5368

(+91) 40-29882270

(+65) 9624 9834

sales@sensen.ai